

EAGLE RIVER Model



This open ranch layout with 9 foot ceilings has approximately 1650 sq. ft. of finished space. It features a great room with fireplace and a deck or patio off dinette for your entertaining needs. A first floor laundry with mud room and great kitchen layout with oak cabinets, microwave and dishwasher gives practicality to this lovely layout. Outside features an oversized garage for your storage or work-shop needs, brick and vinyl siding, and lovely lawn.

Three bedrooms and 2 baths, one of which is the master suite with walk in closet gives the owner plenty of space and comfort. With the high efficiency furnace, Lo-E windows and central air conditioning this will be a comfortable and affordable home for years to come.

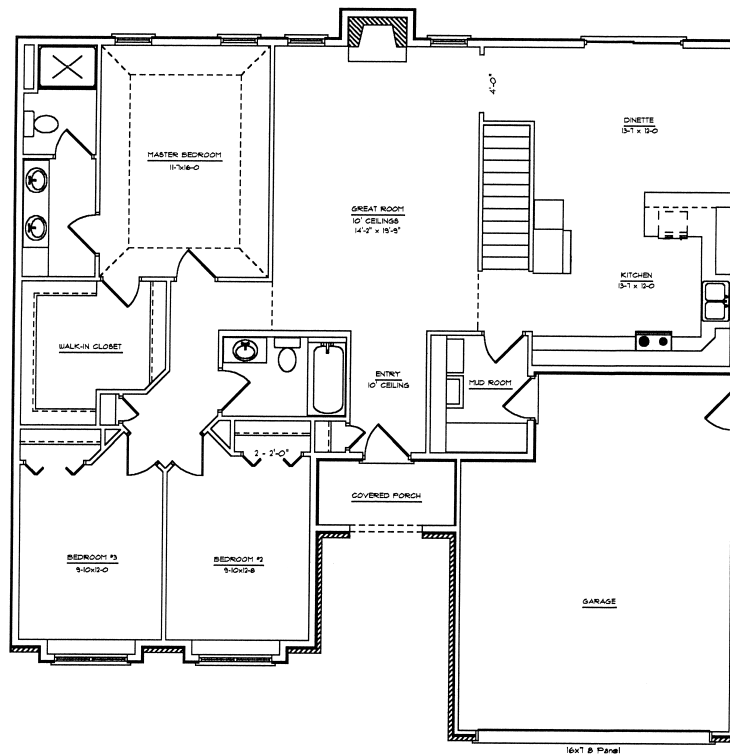
Capitol Land Builders
“Where Quality Counts”


Capitol Land
Homes LLC

For information contact:

Dave Nelson
6706 Raymond Rd., Madison, WI 53719
Phone (608) 270-1000
www.caplandhomes.com

EAGLE RIVER Model



- Open ranch floor plan
- Approximately 1650 sq. ft.
- 3 bedrooms, 2 baths
- Deck or patio off dinette
- Great room with fireplace
- Master suite with walk-in closet
- Brick and vinyl exterior
- First floor laundry/mud room
- Great kitchen layout with oak cabinets
- Oversized garage
- 9 foot ceilings
- 200 Amp service
- 6 foot patio door off dinette
- 2x6 exterior walls w/OSB board
- Central air conditioning
- High efficiency furnace
- Lo-E windows
- Concrete driveway
- Set back thermostat
- Microwave and dishwasher
- Buyer's decorating choices
- 50 gal. direct vent hot water heater
- Sodded front and sides, seeded balance
- Ceramic tiled bath floors
- 5 telephone and 5 cable outlets


Capitol Land
Homes LLC

For more information call:

Dave Nelson
6706 Raymond Rd.
Madison, WI
(608) 270-1000

"Where Quality Counts"